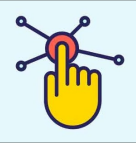
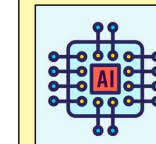


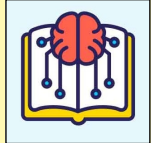
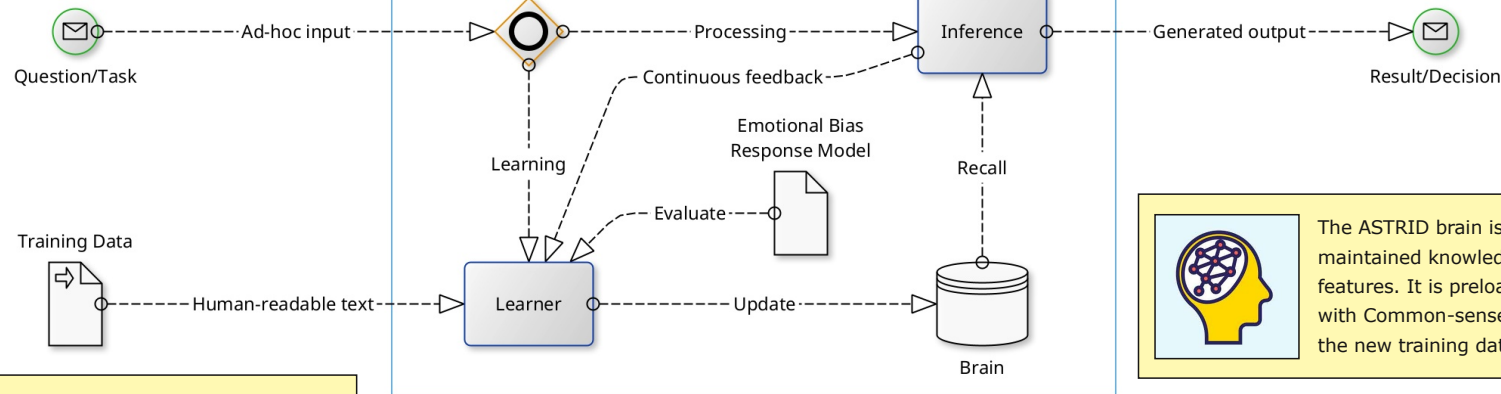
ASTRID

Intelligent Information Processing Knowledge Engineering - Documents Evaluation - Sentiment Mining

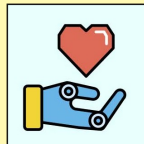
 Actual input for processing can be ad-hoc queries, or any form of predetermined trigger to perform a specific task or set of inferences. Preprocessors can be used to turn any signal into tokens that ASTRID can understand.



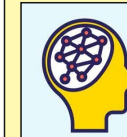
The Inference Engine recalls knowledge from the Brain to reason with, based on the question or task. The inferences that are selecting the correct and needed knowledge are tailor-made for each client and application.



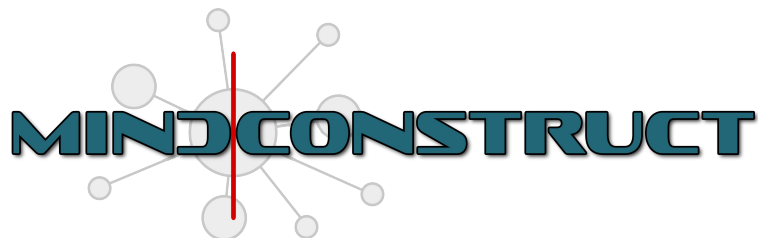
Documents for training are uploaded to the ASTRID system client portal, where the ASTRID system reads and learns the submitted information autonomously and unsupervised.



The Emotional Bias Response Model (EBRM) loads the learned information with predetermined values, in relation to the specific application. This determines the intention and utility of the system.



The ASTRID brain is a continuously and dynamically maintained knowledge graph with very advanced features. It is preloaded (through intensive training) with Common-sense knowledge, to help understand the new training data.



Visit <https://www.mindconstruct.com> for more information.

